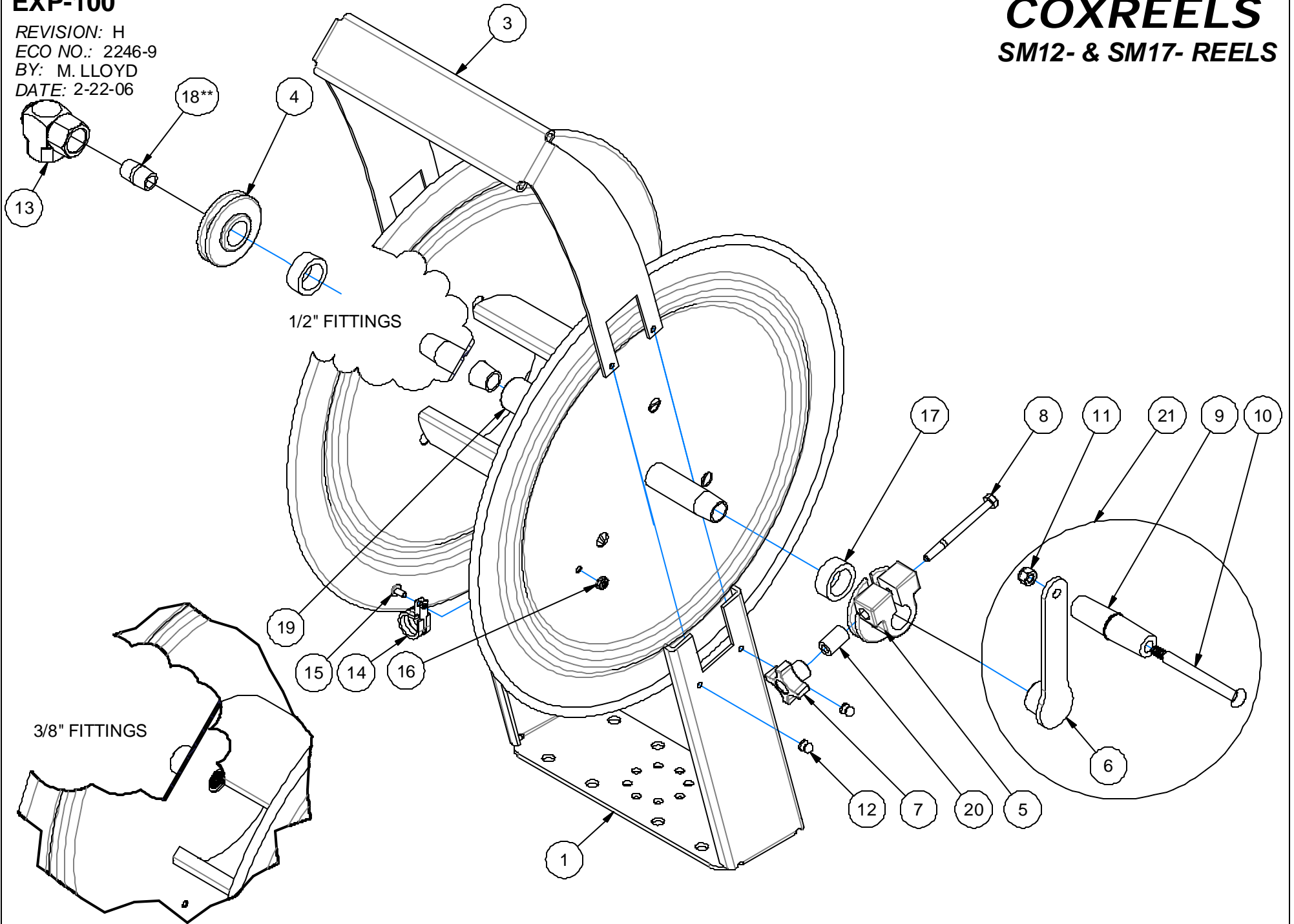


# EXP-100

REVISION: H  
ECO NO.: 2246-9  
BY: M. LLOYD  
DATE: 2-22-06

# COXREELS

## SM12- & SM17- REELS



\*\*3/8" MODELS ONLY

EXP-100

## Common Parts to all Swivel Mount Reels

ASSY. ITEM NO.	DETAIL ITEM NO.	PART NO.	DESCRIPTION	SM12-3-100	SM17-3-250	SM17-4-125
	1	7101-12	BASE, FRAME, 12"	1		
		7101-17	BASE, FRAME, 17"		1	1
	2	7118-1-8-1	ASSEMBLY, DRUM, 12", 3/8" PLUMBING	1		
		7118-2-8-1	ASSEMBLY, DRUM, 17", 3/8" PLUMBING		1	
		7108-2-8-1	ASSEMBLY, DRUM, 17", 1/2" PLUMBING			1
	3	7102	ARM, GUIDE, 12"	1		
		7103	ARM, GUIDE, 17"		1	1
	4	6328-1-1	BEARING, EPDM, PLUMBING SIDE	1	1	1
	5	6329-1-1	BEARING, EPDM, CRANK SIDE	1	1	1
7	15719	KNOB, BLACK, PHENOLIC	1	1	1	
8	7124	BOLT, HEX, 1/4-20 X 3" LONG	1	1	1	
21		7272-1	CRANK, ARM, ASSEMBLY	1	1	1
	6	7107	CRANK, ARM	1	1	1
	9	6333	HANDLE, CRANK	1	1	1
	10	1621	SCREW, SHOULDER, 5/16-18	1	1	1
	11	111-1	NUT, LOCK, 5/16-18 (LOW PROFILE)	1	1	1
	12	7105	RIVET, POP, STAINLESS STEEL, $\phi$ 3/16. .25 GRIP	4	4	4
	13	1935-1	SWIVEL, 3/8" NPT, VITON	1	1	
		439-1	SWIVEL, 1/2" NPT, VITON			1
	14	381	HOSE CLAMP, #10	1	1	
		383	HOSE CLAMP, #12			1
	15	245	SCREW, TRUSS HD, 10-32 X 3/8"	1	1	1
	16	130	NUT, KEPS, 10-32	1	1	1
	17	7104	SPACER	2	2	2
	18	7115	NIPPLE, 3/8-18 X CLOSE SCH. 80	1	1	
	19	7116	AXLE, PLUMBING, 1/2-14 COUPLING			1*
20	7125	SPACER, BRAKE KNOB	1	1	1	

\*SHOWN FOR REFERENCE. INCLUDED WITH DRUM ASSEMBLY.

REVISION: **H**ECO: **2246-9**DATE: **2-22-06**NAME: **M. LLOYD**